



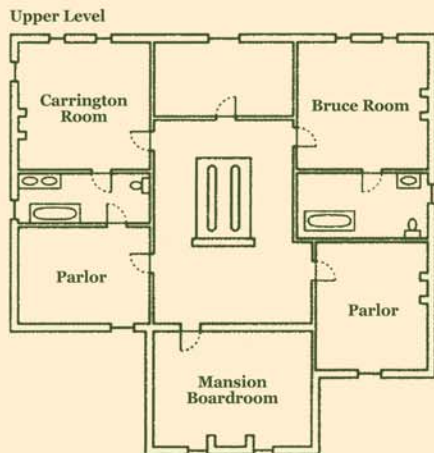
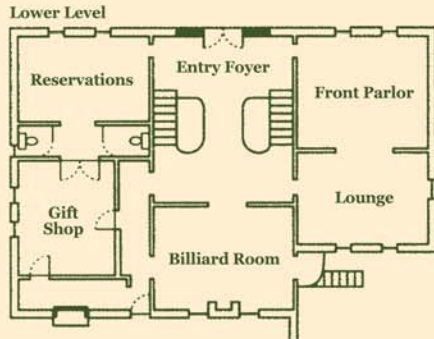
# BERRY HILL MEETING ROOMS & SPACES

PUBLIC AREAS	ROOM DIMENSIONS	SQUARE FOOTAGE	CEILING HEIGHT	RECEPTION STYLE	BANQUET - 72" ROUND	
					6 PER TABLE	7 PER TABLE
The Dining Room	33' x 67'	2,211	27'	150	96	112
Mansion*	94' x 66'	6,204	Varies	175		
Historic Berry Hill Tavern	20' x 72'	1,140	10'	60		

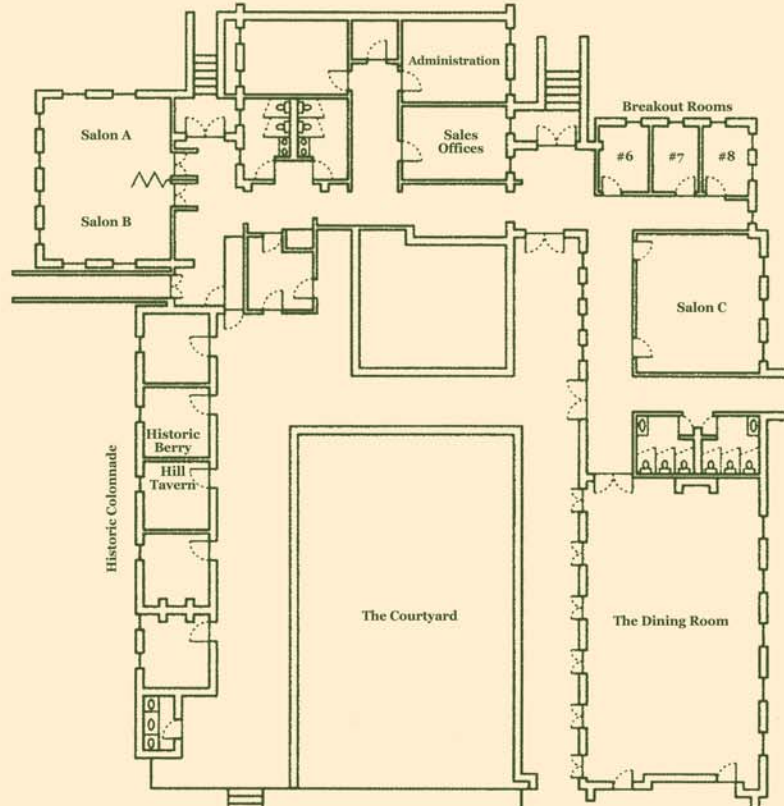
\* Mansion includes the Entry Foyer, Resrvations Office, Front Parlor, Board Room and the Billiard Room.

MEETING ROOMS	ROOM DIMENSIONS	SQUARE FOOTAGE	CEILING HEIGHT	CLASSROOM STYLE	BOARDROOM STYLE	THEATRE STYLE
Salon A & B	56' x 25'	1,400	12' 0"	75	-	140
Salon A	28' x 25'	700	12' 0"	35	-	70
Salon B	28' x 25'	700	12' 0"	35	-	70
Salon C	28' x 25'	700	12' 0"	35	-	80
Historic Berry Hill Tavern	20' x 18'	360	9' 3"	-	12	-
Breakout Room #6	14' x 18'	252	10' 0"	-	10	-
Breakout Room #7	14' x 18'	252	10' 0"	-	10	-
Breakout Room #8	14' x 18'	252	10' 0"	-	10	-
Mansion Boardroom	18' x 20'	360	9' 8"	-	12	-

## THE INN AT BERRY HILL



## CLASSROOMS & MEETING ROOMS



3105 RIVER ROAD • SOUTH BOSTON, VIRGINIA 24592  
 PHONE 434-517-7000 • FAX 434-572-5287

[www.BerryHillInn.com](http://www.BerryHillInn.com)